



ULTRA LINE FRP WATER SOFTENERS

TECHNICAL DATA SHEET



M010-70 - Rev. 00 - 02/2016

Automatic water softeners with pneumatic valves and bobbin tank (FRP). Equipped with exclusive **Culligan CSM GBE** control system. Ideal for all commercial and industrial uses. They cover all water softening needs up to a theoretical flow rate of 70 m³/h.

If installed to serve food users such as hotels, tourist resorts, apartment blocks and shopping centers, the water softener will be combined with a resin disinfection kit consisting of dosing pump, junction box, container for the disinfectant product, as provided for by Min. Decree 25 of February 2, 2012.

The vertical cylindrical container is made of anti-corrosion composite material with PE liner coated with fiberglass and epoxy resin, in compliance with European Directive 97/23/EC Art. 3.3 for pressure vessels (PED), in compliance with Min. Decree no. 174 of 06/04/2004 for materials suitable for contact with water intended for human consumption.

MAIN FEATURES

- Simplex, Duplex and Triplex configurable
- PVC valve assembly with pneumatic valves in Noryl or Butterfly valves
- Equipped with exclusive **Culligan GBE** control unit
- FRP bobbin tank

CMS GBE CONTROL UNIT FEATURES

- Self-diagnosis
- Remote display
- Serial ports: USB - RS232 - RS485
- Communication protocols: MODBUS - PROFIBUS

APPLICATION FIELDS

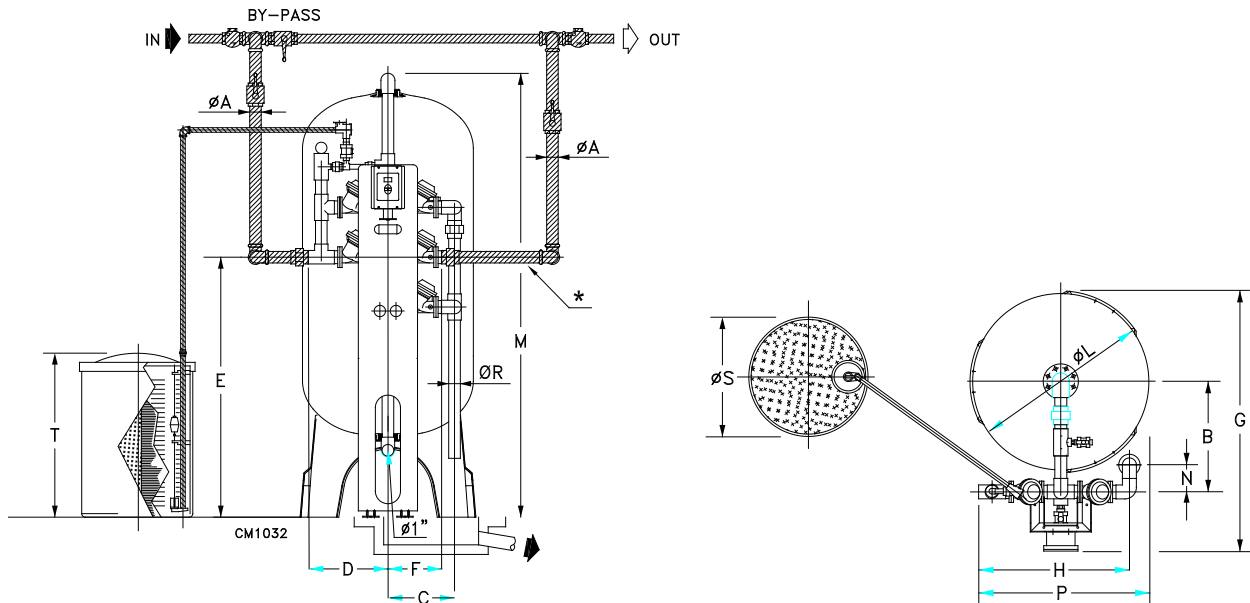
- Apartment blocks
- Hotels
- Holiday farms
- Tourist villages
- Cooling towers
- Food Sector
- Steam generators
- Sterilizers
- Car washes
- Laundries
- Schools
- Shopping centers



CULLIGAN Italiana S.p.A.

Via Gandolfi, 6 - 40057 Cadriano di Granarolo dell'E. BO (ITALY)
Phone +39 051 6017 111 – Fax +39 051 7656 02 – www.culligan.it

Culligan reserves the right to change any technical or design specifications



Note: THE PARTS INDICATED IN GRAY ARE NOT INCLUDED IN THE STANDARD CULLIGAN SUPPLY. THE SIZES OF THE DISCHARGE PIPING STARTING FROM THE TRAP (NOT SUPPLIED BY US) MUST BE CALCULATED ACCORDING TO THE FLOW RATES AT THE SYSTEM DRAIN OUTLET.

ULTRA LINE FRP Model	A ** Fittings IN/ OUT "	Exchange capacity *** m ³ .°f		Flow rate to service (SR) m ³ /h	G mm	L dia. ♦ mm	M mm	P mm	Salt container		Weight in operation kg
		minimu m	maximum						S dia. mm	T mm	
HA 200	1½	734	1188	18	982	555	2063	693	715	1310	495
HA 230		800	1359								
HA 290	2	1047	1698	26	1039	610	2298	751	850	1320	715
HA 320		1150	1869								
HA 430	2	1570	2550	30	1201	770	2353	817	1025	1290	1080
HA 510		1887	3060								
HA 770	2	2827	4587	34	1414	927	2410	927	1070	1360	1830
HB 770	2½	2827	4587	50	1432	927	2410	1043	1070	1360	1840
HB 770 *	3	2827	4587	50	1451	927	2570	1034	1070	1360	1850
HA 850	2	3141	5097	34	1414	927	2410	927	1070	1360	1940
HB 850	2½	3141	5097	50	1432	927	2410	1043	1070	1360	1950
HB 850 *	3	3141	5097	55	1451	927	2570	1034	1070	1360	1960
HA 1200	2	4503	7136	34	1684	1226	2654	1264	1580	1260	2800
HB 1200	2½	4503	7136	50	1668	1226	2654	1264	1580	1260	2810
HB 1200 *	3	4503	7136	65	1685	1226	2654	1264	1580	1260	2820
HA 1400	2	5235	8325	34	1684	1226	2654	1264	1580	1260	3000
HB 1400	2½	5235	8325	50	1668	1226	2654	1264	1580	1260	3010
HB 1400 *	3	5235	8325	70	1685	1226	2654	1264	1580	1260	3020
HB 1550	2½	5549	8825	60	1917	1418	3310	1418	1580	1260	4200
HB 1550 *	3	5549	8825	75	1929	1418	3310	1418	1580	1260	4210

* Models with 3" fittings have butterfly valves.

** The diameters given only refer to the fittings of the water softeners and do not indicate the diameters of the pipes connecting them to the hydraulic system. The inlet and outlet fittings are PVC bonding.

*** The exchange capacity is based on water having a total hardness of 40°f (400 ppm CaCO₃) and with salinity of 500 ppm, free of oil and turbidity, colorless and delivered with the flow rate foreseen for continuous service; however, it can vary according to other parameters such as chloride content, available hydraulic pressure, discontinuous drawing of treated water, purity and type of regenerant used.

♣ The dimensions can vary by ± 2%.

♦ All models have a Tripod support base consisting of a single skirt with 3 points of contact with the support surface. For the size of the base, add about 10 cm to the size of the container.

- Operating temperature: 5-40°C.

- Electrical power supply: 230-110-24V single-phase - 50-60 Hz

- Installed power: 20 W

- Operating pressure: min. 2 bar – max 7 bar

M010-70 - Rev. 00 - 02/2016

CULLIGAN Italiana S.p.A.

Via Gandolfi, 6 - 40057 Cadriano di Granarolo dell'E. BO (ITALY)

Phone +39 051 6017 111 – Fax +39 051 7656 02 – www.culligan.it

Culligan reserves the right to change any technical or design specifications