



# ULTRA LINE

SOFTENER **CE**

HB 1700 – 6600



M000-98 – Rev. 02 - 06/2011

## TECHNICAL DATA SHEET

---

### GENERAL

The Culligan Ultra Line softeners range, for its exchange capacity and flow rates, fits with small and medium industry needs.

This series includes many models and a wide range of capacities, as well as a range of accessories, which are up to personalize the unit according to the customer's needs.

When softened water is also intended for food purposes (hotels, tourist resorts, commercial and residential centres, etc.), a dosing pump will be coupled with the softener for the automatic disinfection of resins, according to the Ministerial Decree N° 443 – 21/12/1990.

The regeneration can be started according to different criteria: the Culligan expert will help you in choosing the one fitting to your needs.

#### As default:

- **time-clock control:** an electronic card starts the regeneration at pre-set time intervals.

#### As option:

- **volume control:** a device (including a flow-meter) starts the regeneration after a pre-set volume of water treated.
- **alternate regeneration:** the volume control principle can be applied to two softeners operating in alternance. The softened water supply to the service is uninterrupted.
- **Quality control:** a device which "senses" the product water quality and starts the regeneration whenever necessary.

### CONSTRUCTION FEATURES

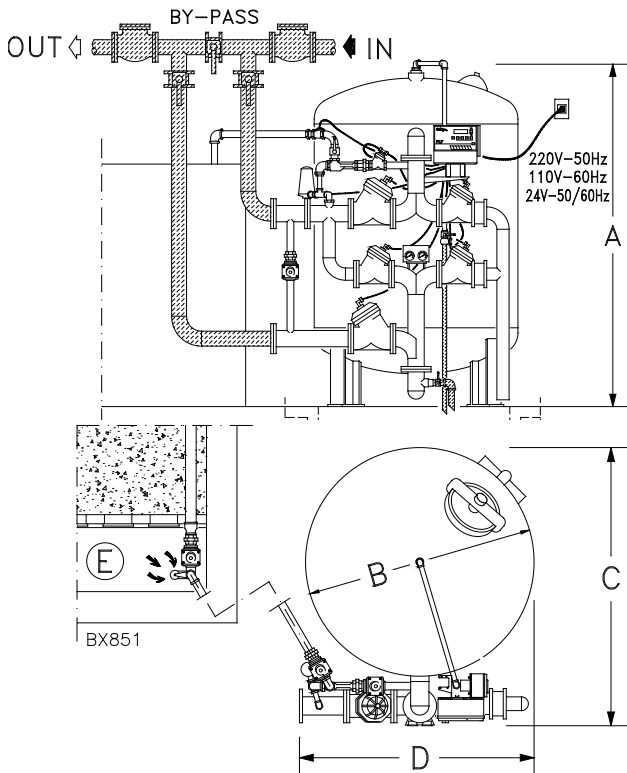
The tank is made of steel and it is protected internally by a food-grade layer of epoxy resins of controlled thickness and covered externally by an enamel paint.

---

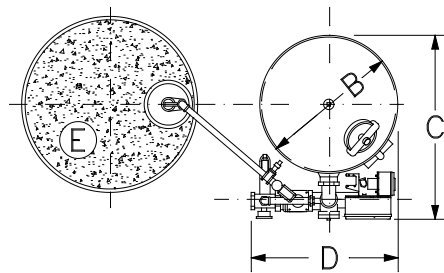
**CULLIGAN Italiana S.p.A.**

Via Gandolfi, 6 - 40057 Cadriano di Granarolo dell'E. BO (ITALY)  
Phone +39 051 6017 111 – Fax +39 051 7656 02 – [www.culligan.it](http://www.culligan.it)

*Culligan reserves the right to change any technical or design specifications*



Model	ULTRA LINE HB			
	1700 2100	2500 3000	4500	6600
A mm	2620	2660	3030	3100
B mm	1500	1800	2100	2500
C mm	1850	2110	2570	2950
D mm	1550	1800	2200	2500
E mm	dia. 1580	4400 x 4050	4400 x 4050	4400 x 4050
h mm	1260	2000	2000	2000



Note: parts shown in gray are not included in Culligan standard supply. Dimensions of drain sump must be sized in accordance to outlet flow rate of equipment drain.

## TECHNICAL SPECIFICATIONS

Ultra Line	Model	HB 1700	HB 2100	HB 2500	HB 3000	HB 4500	HB 6600
Average flow rate	m <sup>3</sup> /h	55	55	65	65	120	120
Peak flow rate	m <sup>3</sup> /h	114	114	114	114	227	227
Average loss flow rate	bar	0,4	0,5	0,4	0,5	0,6	0,7
Connections (flanged)		DN 100	DN 100	DN 100	DN 100	DN 150	DN 150
Cycle capacity	°f.m <sup>3</sup>	5970 10430	7520 11390	8470 16050	9680 18480	15520 28500	23180 42900
Consumo sale x rigenerazione per regeneration	Salt consumption kg	111 328	150 328	165 564	186 660	300 1020	450 1500
Water consumption per regeneration	m <sup>3</sup>	8,6	8,6	13	13	16,6	32,8
Resin	litri	1568	1904	2296	2632	4032	6020
Operating weight	kg	6105	6354	8480	8760	13080	19585
Shipping weight	kg	3355	3644	4500	4790	7300	10485
<b>Salt tank capacity</b>							
Operating weight	kg	2300	2300	To be built in concrete. Capacity: 20 t of salt			
Shipping weight	kg	385	385				

M000-98 - Rev. 02 - 06/2011

Pressure: min 2 bar - max 7 bar (HB 1700, HB 2100 models)  
 min 2 bar - max 5 bar (other models)  
 Temperature: min. 2 °C - max 40 °C  
 Power Supply: 230V-50Hz/110V-60Hz/24V-50Hz  
 Regeneration time: circa 70 minuti.

- The exchange capacity is based on water having 40°f (400 ppm CaCO<sub>3</sub>) of total hardness, 500 ppm TDS, no oil, no colour, no turbidity and a continuous service flow rate. However, it may change depending on other parameter, such as chlorides, available pressure, discontinuous flow of treated water, the quality and the type of the regenerant used.

**CULLIGAN Italiana S.p.A.**

Via Gandolfi, 6 - 40057 Cadrano di Granarolo dell'E. BO (ITALY)  
 Phone +39 051 6017 111 - Fax +39 051 7656 02 - [www.culligan.it](http://www.culligan.it)

*Culligan reserves the right to change any technical or design specifications*